

Activation Of Contemporary Public Spaces

Eduardo Cotino, Magnus Gytte, Wojtas Adam, Ustaomeroglu Meriç



SWOT ANALYSIS

STRENGTHS

THERE ARE GOOD RECREATIONAL SPACES IN THE AREA

GOOD CLIMATE CONDITIONS

SOCIAL AND CULTURAL IDENTITY

UNIVERSITY FACILITIES IN THE AREA - YOUNG HABITANTS

OPPORTUNITIES

CONNECT WITH THE BEACH PROMENADE

CREATING GREEN INFRASTRUCTURE

POSSIBILITY OF TRANSFORMATION OF CULTURAL BUILDINGS

BIKE LANES CONNECTING TO CITY

WEAKNESSES

POORLY DEVELOPED PUBLIC TRANSPORT COMMUNICATION

BARRIERS FOR PEDESTRIAN MOVEMENTS - TOO MANY ROADS

HIGH NOISE LEVEL

VISUAL BARRIERS/POLLUTION

THREATS

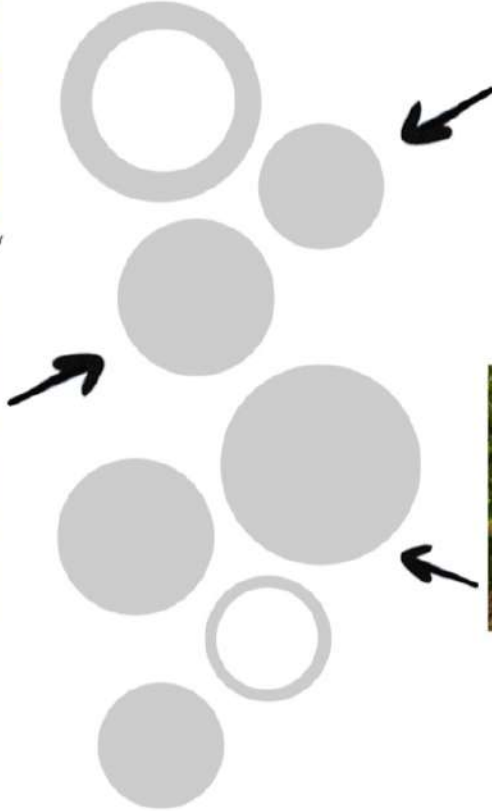
INDUSTRIAL AREA IS VERY CLOSE

CONFLICTIVE NEIGHBOURHOOD CLOSE TO THE AREA.

LACK OF SAFETY AT NIGHT.

IDEA

Different activities in each circle



Multifunctional public space - activity zone in Chorzów
SLAS architects



Ikoji no Hiroba
Architects Chwała Sp.



Plaza Ovidi Montllor
BAAS arquitectura



Park'n'Play
JaJa Architects



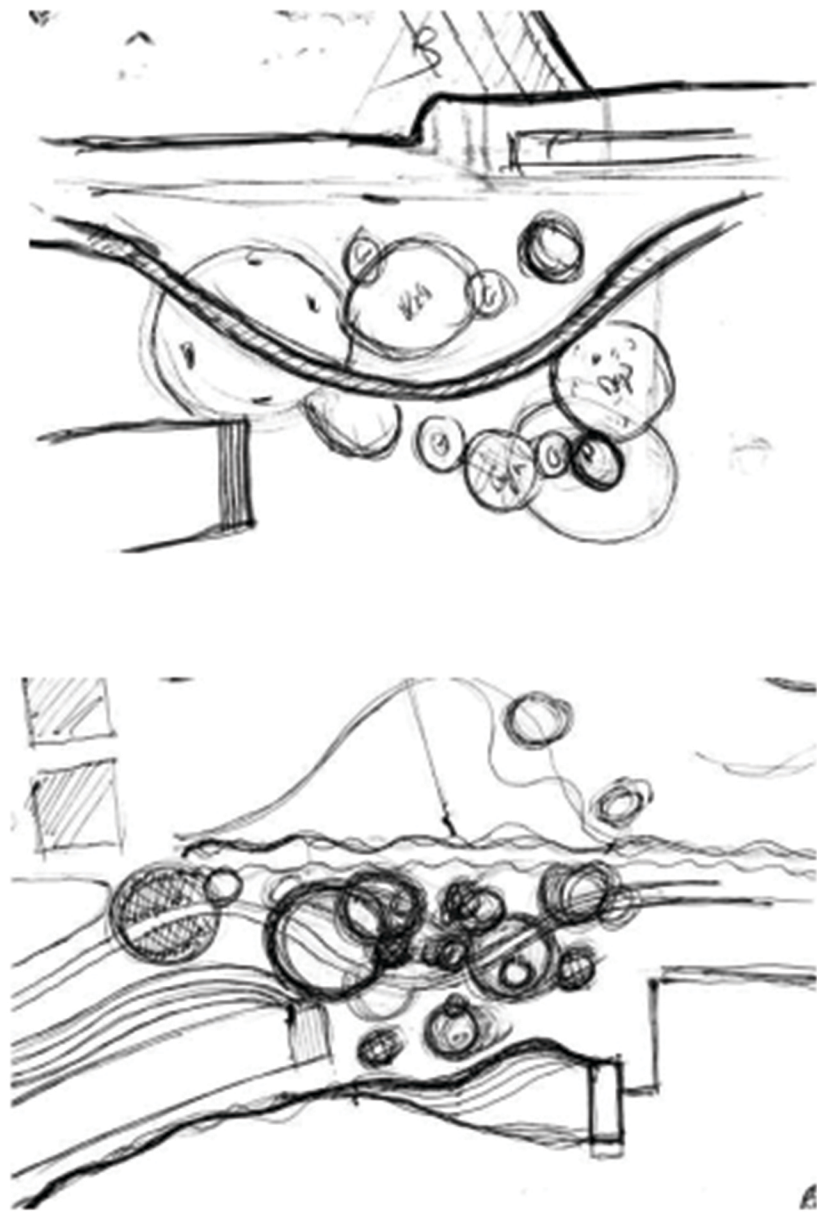
East 110th Street Playground
Designed by the Conservancy's office of Planning,
Design, and Construction

WEST BEACH PROMENADE BENIDORM



OAB, BENIDORM, SPAIN 2009

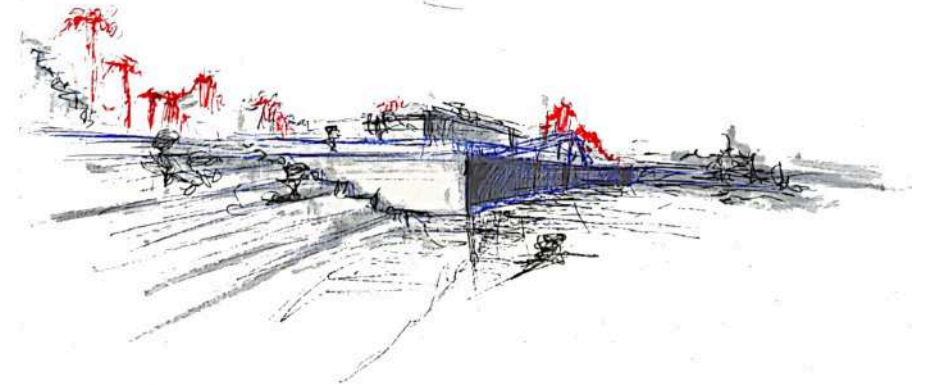
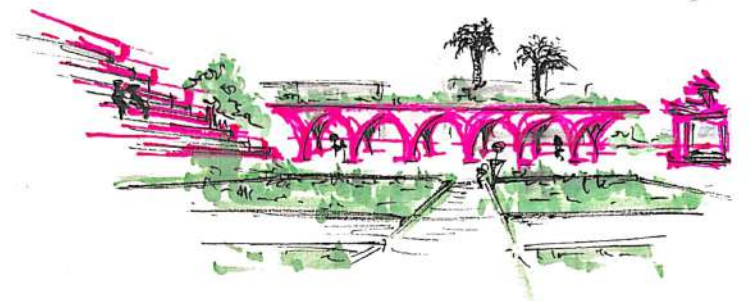
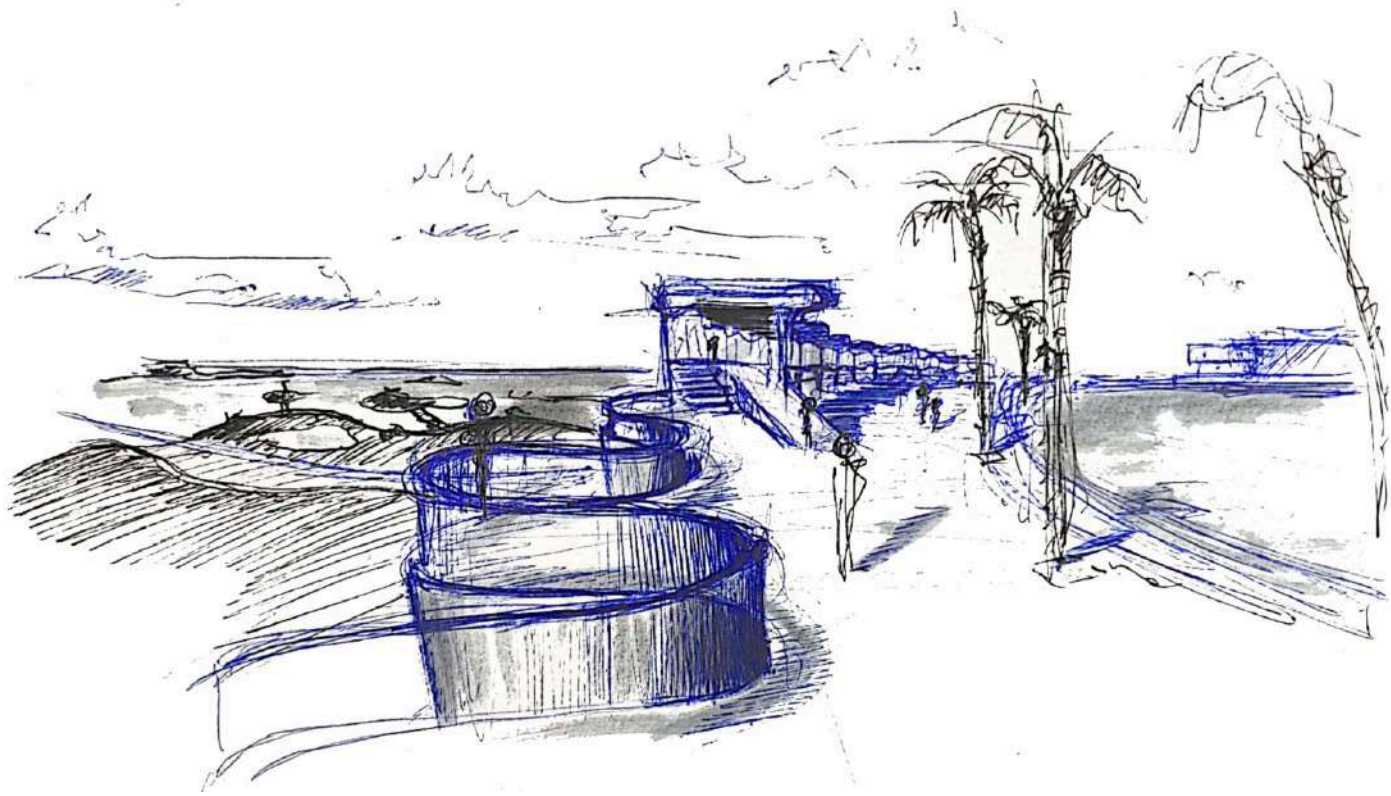




New Masterplan



Axonometric





Cracow University
of Technology



CEU | *Universidad
Cardenal Herrera*



POLITECNICO
MILANO 1863